

Pager Tool Tutorial

2007

Pager Tool	3
Where do we begin?	3
Start building!.....	4
Finishing Touches.....	13
Enhancing Nodes.....	13
<i>Strokes</i>	15
<i>Fill</i>	16
<i>Shadow</i>	17
<i>Background</i>	18
<i>Mask</i>	19
Altering Images	21
<i>Opacity</i>	21
<i>Tints and Masks</i>	23
Highlighting your text	24
Ordering from Your Created Layouts	28
You did it!	28

Pager Tool


Ramsey Resources is pleased to offer one of our newest features in Ramsey ROES - the **Pager Tool!** An additional option to ease your ordering process, the Pager Tool allows you to create your own layouts. Whether used for proofing, composites, sport events or wedding albums, this tool is a timesaving device that let's you design pages to satisfy not only you, but your customers as well.

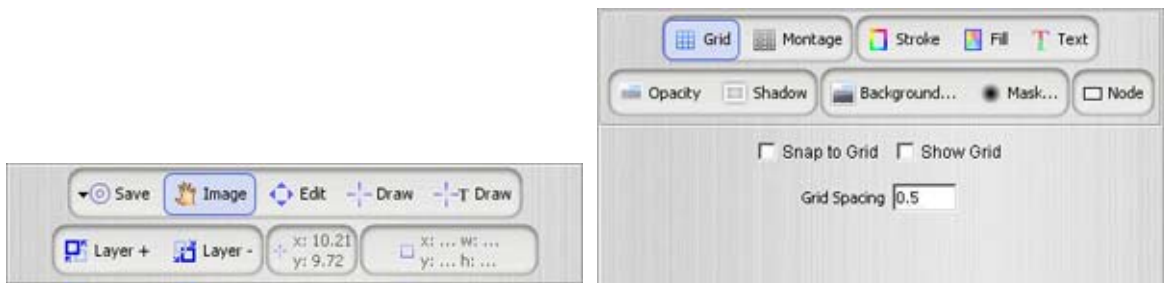
Once created, your pages are saved and can be reused as designed or edited as the need arises. There are no limits! Create images nodes and text nodes. Add shadows, strokes, masks, and backgrounds.

The steps to designing your own pages are fairly simple and, with a little practice, you'll wonder how you ever managed without! If you have not used Ramsey ROES prior to this, we strongly recommend you experiment first with the basic program. This will familiarize you with options and buttons that you will need to become an expert with the Pager Tool! If you're already an expert and ready to explore your knack for design, let's get started!

Where do we begin?



We've made the  button hard to miss on the opening page in Ramsey ROES. Clicking once on the button will bring up the tools you need to begin.



While the page does not look significantly different, there are a few additions. You will notice a new window - My Templates - has popped up. This will remain empty until you have created a page and saved it.



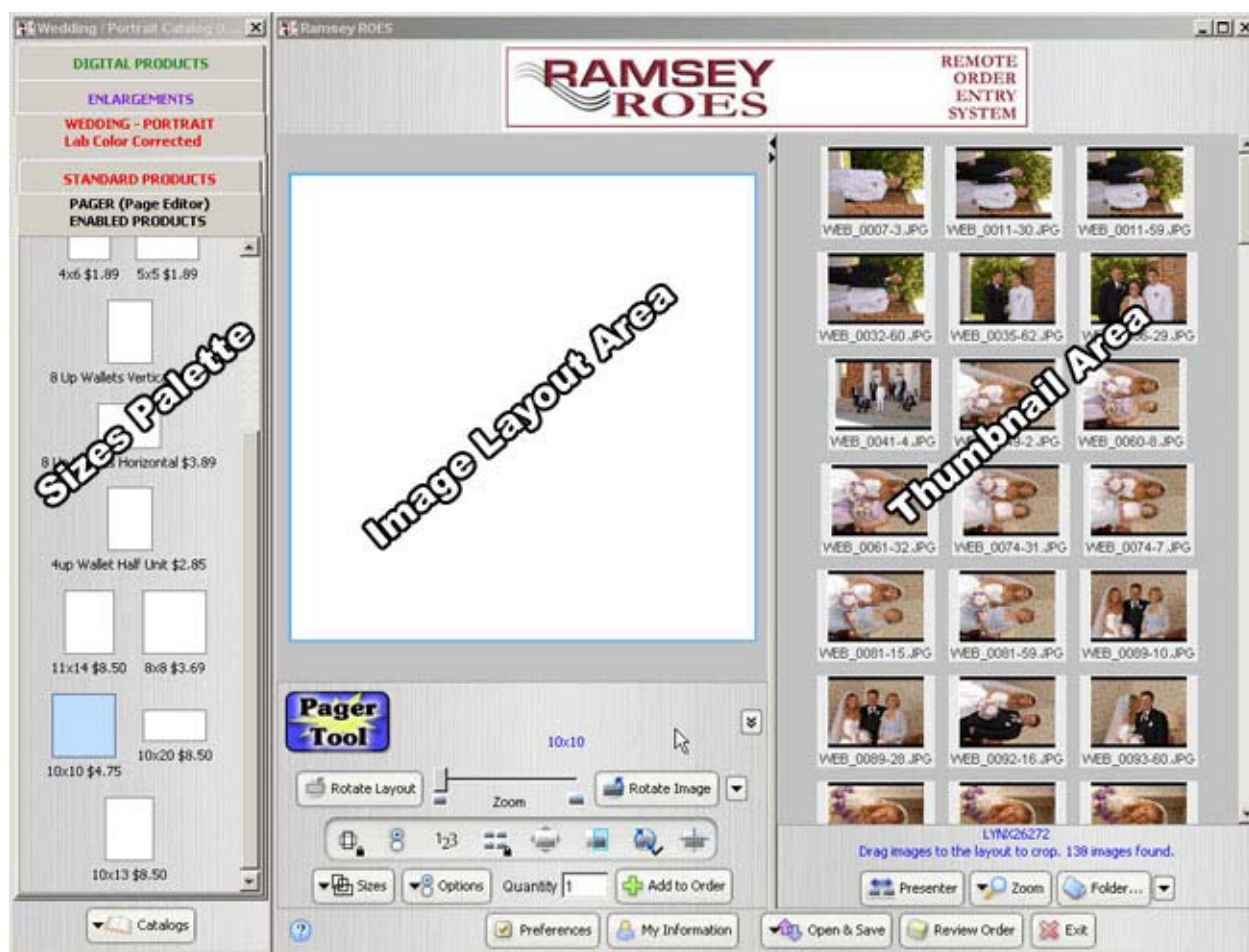


Close that window for now - it will reappear automatically when you are ready to **Save** !

With the extent of options available, you should have some idea of which type of page you want to build. You can use any of the selections in the **PAGER (Page Editor) ENABLED PRODUCTS**, of which there are many.

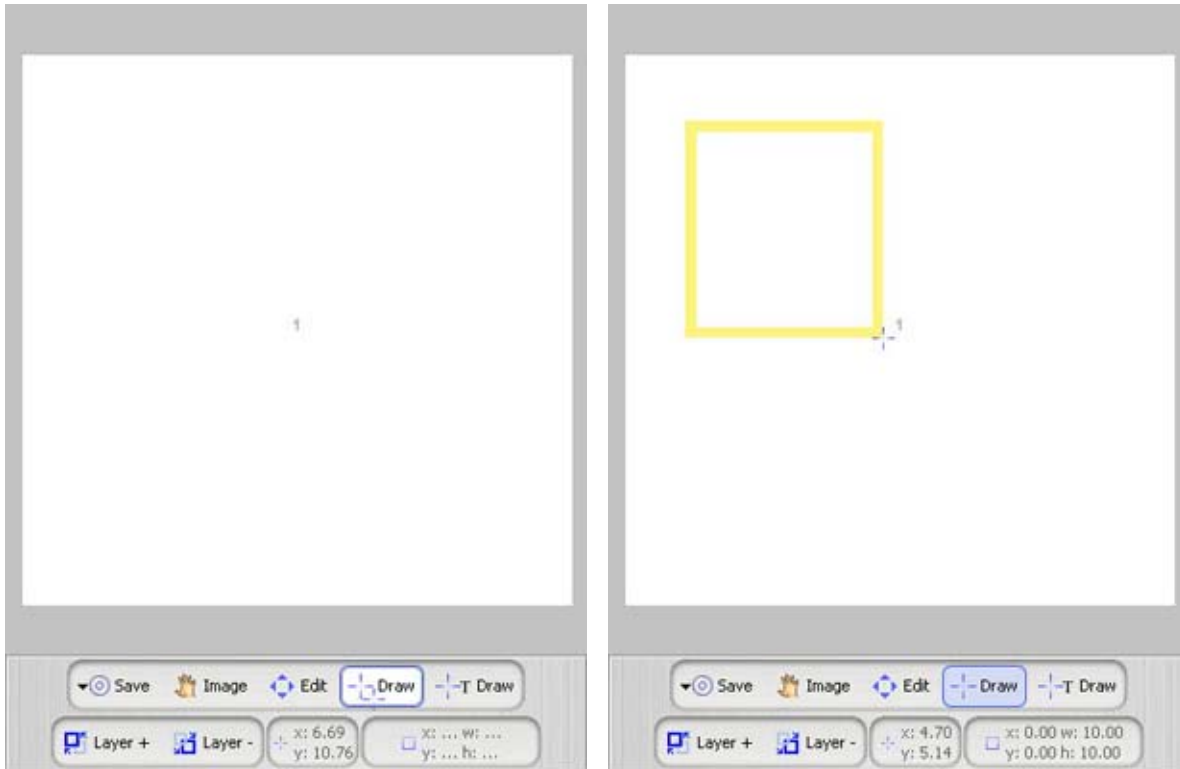
Start building!

To begin, simply select and click on the size you need. This template will appear on the Image Layout Area.

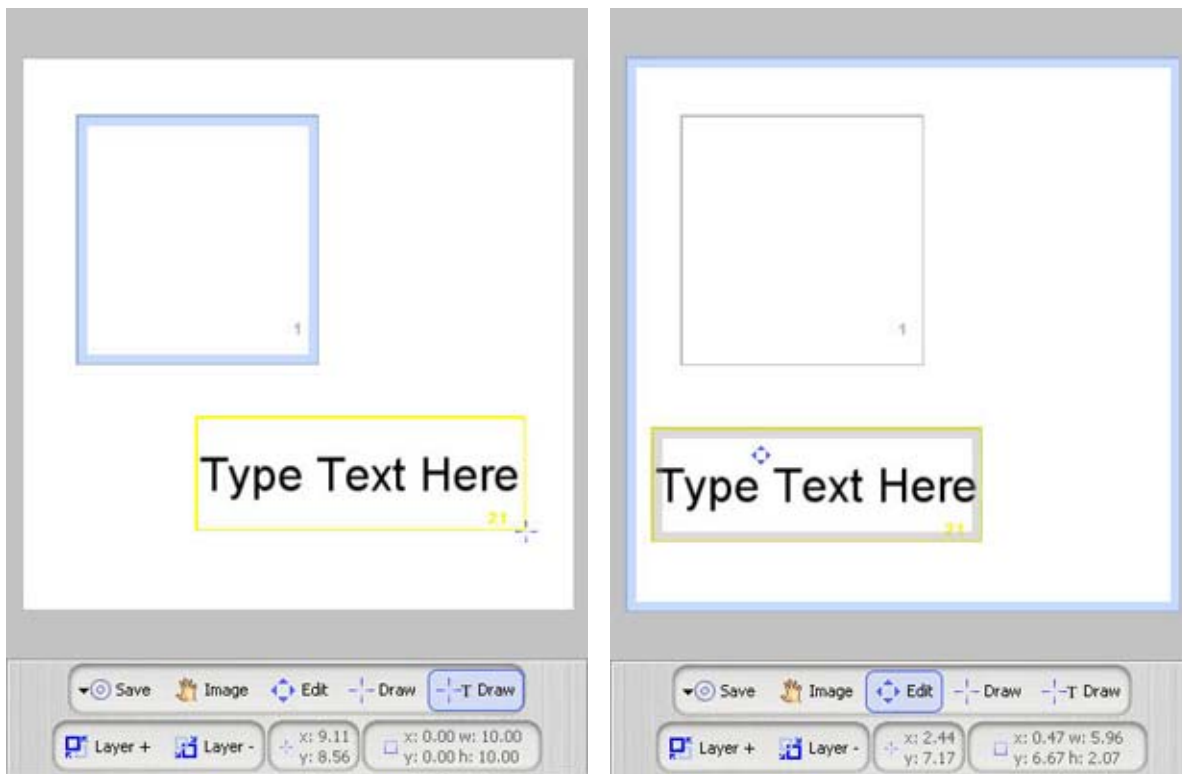


Keep in mind that this entire frame is also an image node - you will not need to draw a box that size on top of the template to be able to fill the frame.

Now, you can begin 'drawing' additional nodes - both image and text! Passing the cursor over the selections below the template will highlight the buttons allowing you to choose. Click once on the **Draw** button.



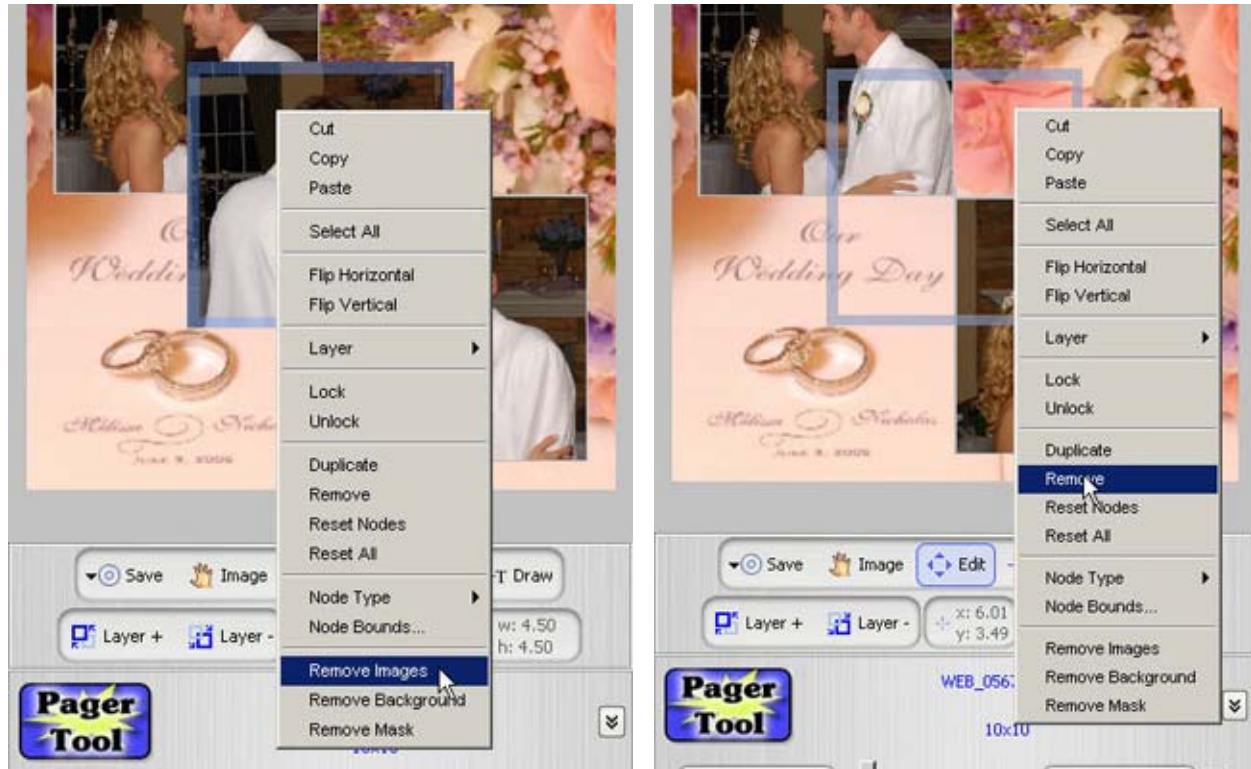
A number 1 will appear on the template, reminding you that it is your first node. The draw tool replaces your normal cursor when moved onto the template. To draw your second node, simply click and hold while moving the cursor until the box is the size you need. To move the box, click on the **Edit** button. Using the **T Draw** button will build a text box with "Type Text Here" appearing in the box once it is built.



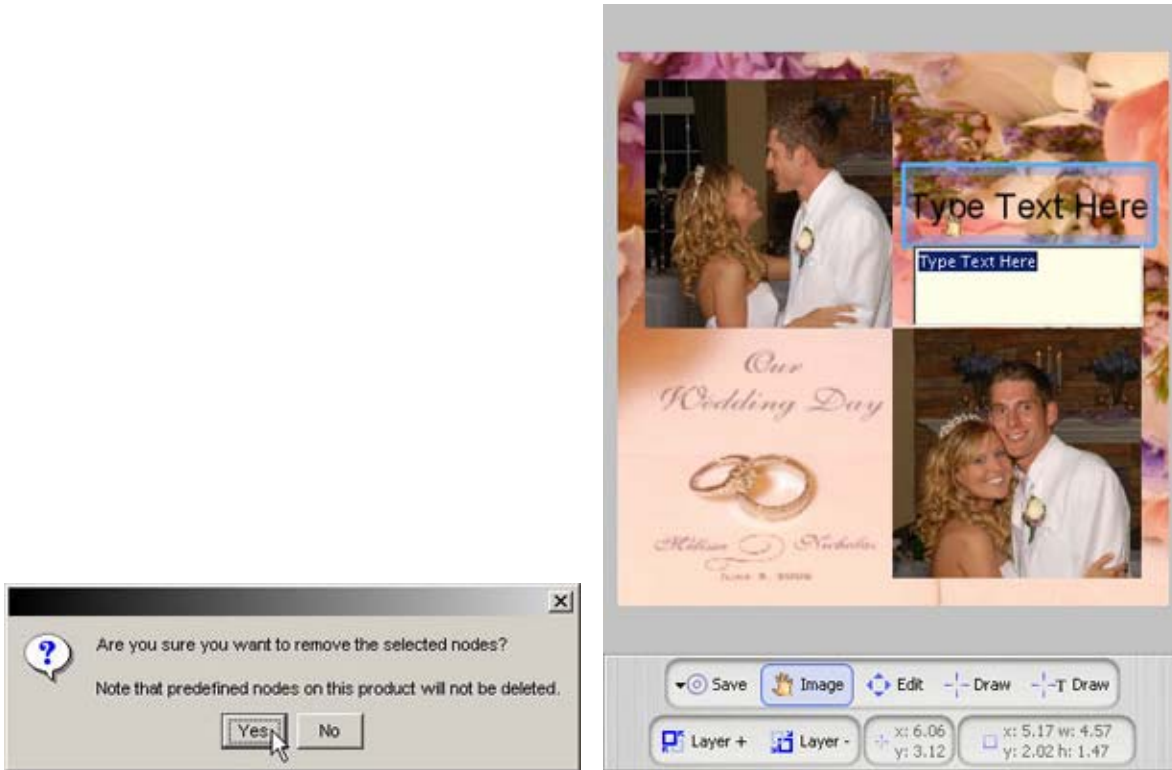
The four-cornered edit tool will move the entire box wherever you desire.



You can also change the size of the box by moving the tool to the edge, (where it will change to 'arrows') clicking and dragging the border to extend the shape. Moving the tool to the corners allows you to rotate the nodes for a more creative flair. You can draw any number of boxes you like, each being an individual image node. (The lightly colored frames around each node will NOT appear in the finished product.)

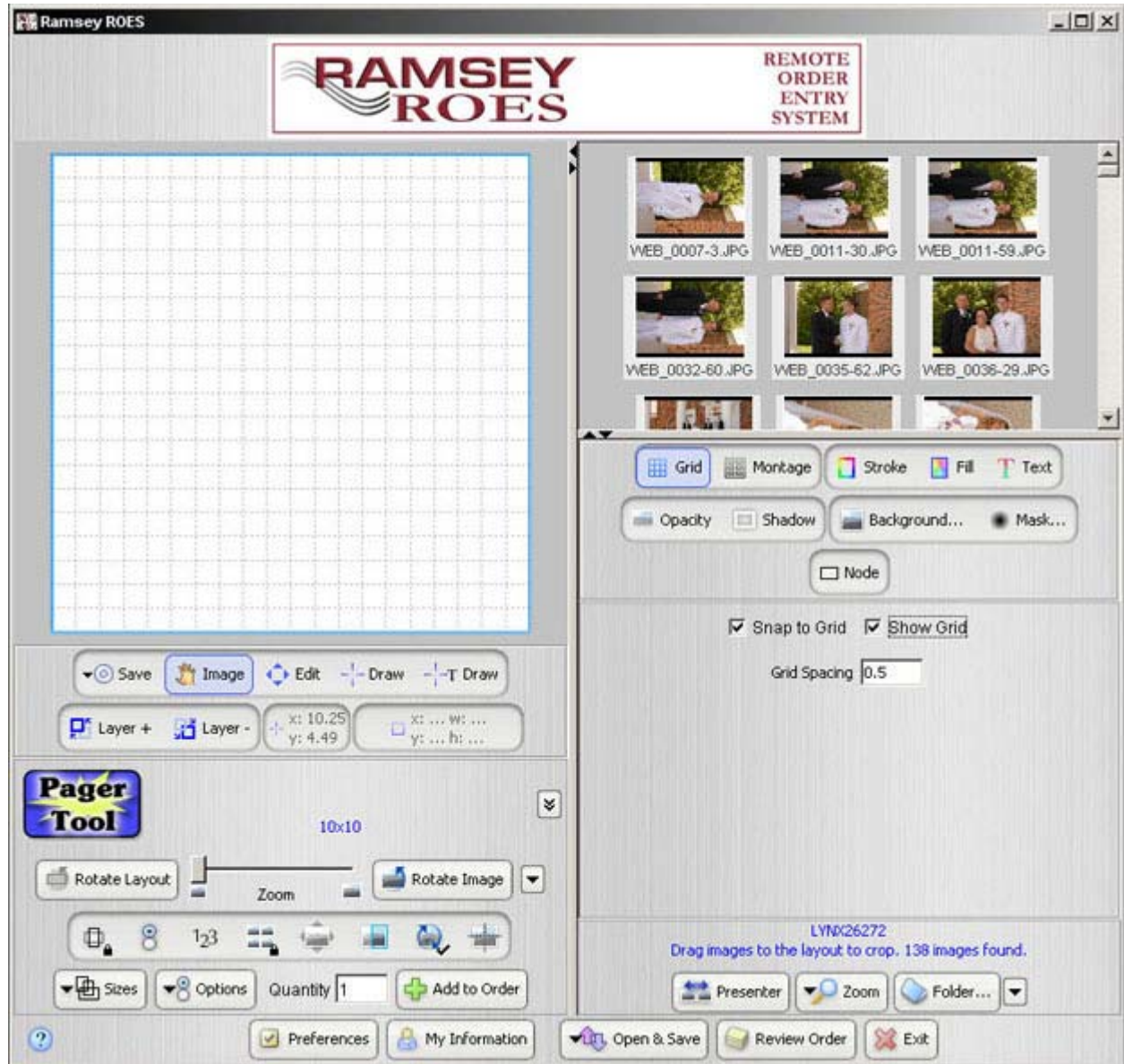


The images can easily be removed after the page is completely set up by right clicking over the image and selecting *Remove Images*. To remove a node that you have created, right click inside the box and select *Remove*.

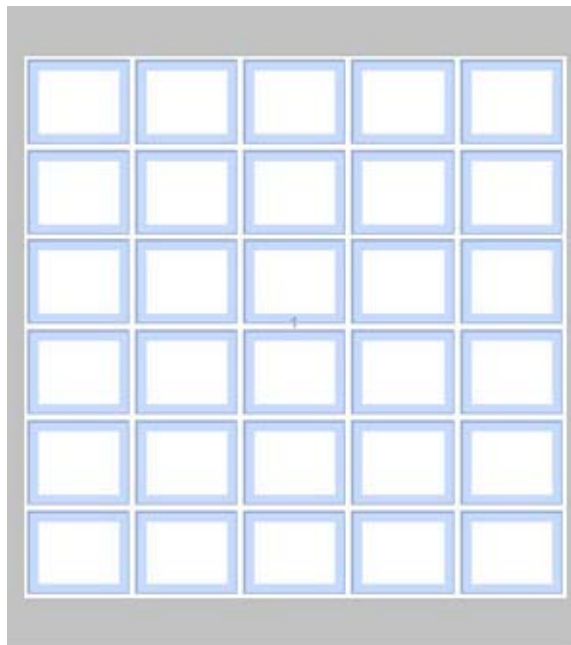
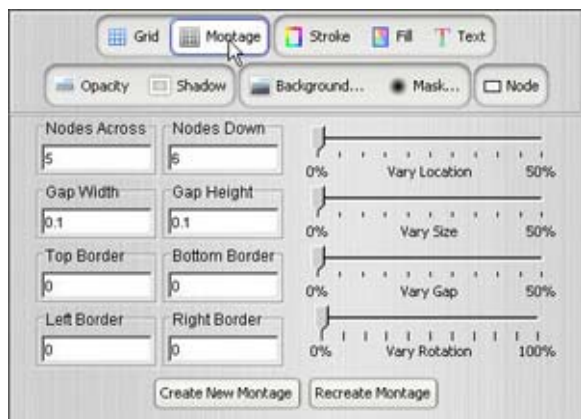


You will be questioned about removal every time you choose to do so! If you have created text boxes, adding the text you need is simple and can be changed while setting up an order to be sent. Choose the text box with the **Edit** button. Once selected, click on the **Image** button, then click once on the text box. A drop box will appear allowing you to enter whatever text desired.

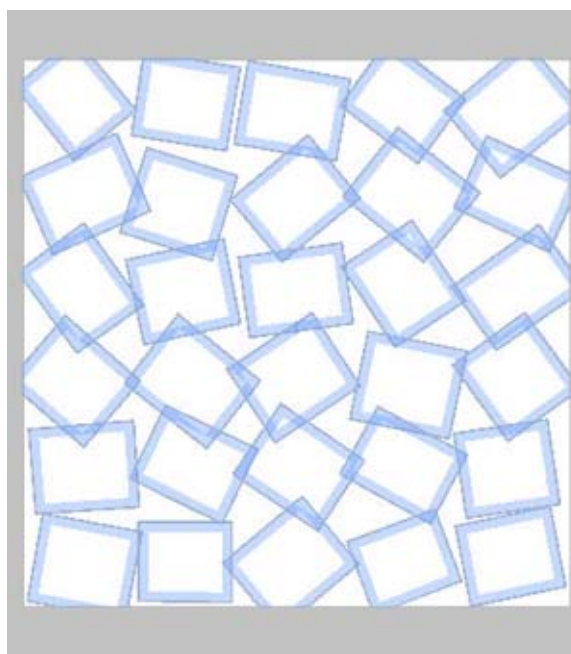
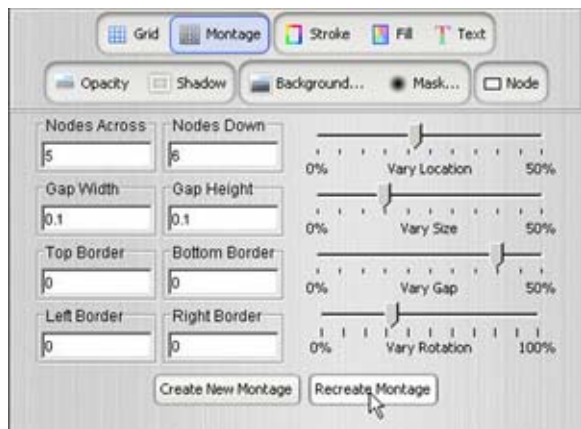
Making it 'Perfect!'



Several tools are at hand to help you perfect your basic design. Clicking on the **Grid** button to the right and checking *Show Grid* will put a grid on the template to use for keeping nodes evenly spaced from the edges and each other. Checking *Snap to Grid* can be used for precise placement on one of the guidelines. The frames will jump to the top and left side of the node only, so this is not always a favorable choice unless the grid was in place while drawing the nodes. The **x** and **y** information listed below the template is also another way to measure your placement. While using the Draw tool, the **x** and **y** on the left tell you the exact placement of the cursor. Once the node is drawn, the **x** and **y** on the right give you the dimensions for the node below the cursor.



To create a page with multiple nodes uniformly placed, the **Montage** button to the right is a tremendous help. You select the number of nodes both across and down and the distance from both the border and each other. For a multiple image layout, this is absolutely the easiest way to go! Once you have entered the quantity and spacing information, click on the **Create Montage** button.



You can keep the 'orderly' look and jazz it up a little by playing with the sliding scales on the far right. Keep in mind that a little goes a long way here. Making changes is quite simple. Slide your options to the degree you think you want and click on the **Recreate Montage** button. Not what you wanted? Slide it back or

forward, change the number of nodes, adjust the spacing and Recreate Montage again. Each of these nodes can be moved with the Edit button if the sliding scale doesn't get it 'just right.'

Once you are satisfied with the initial layout of the page, the real fun begins!

FINISHING TOUCHES

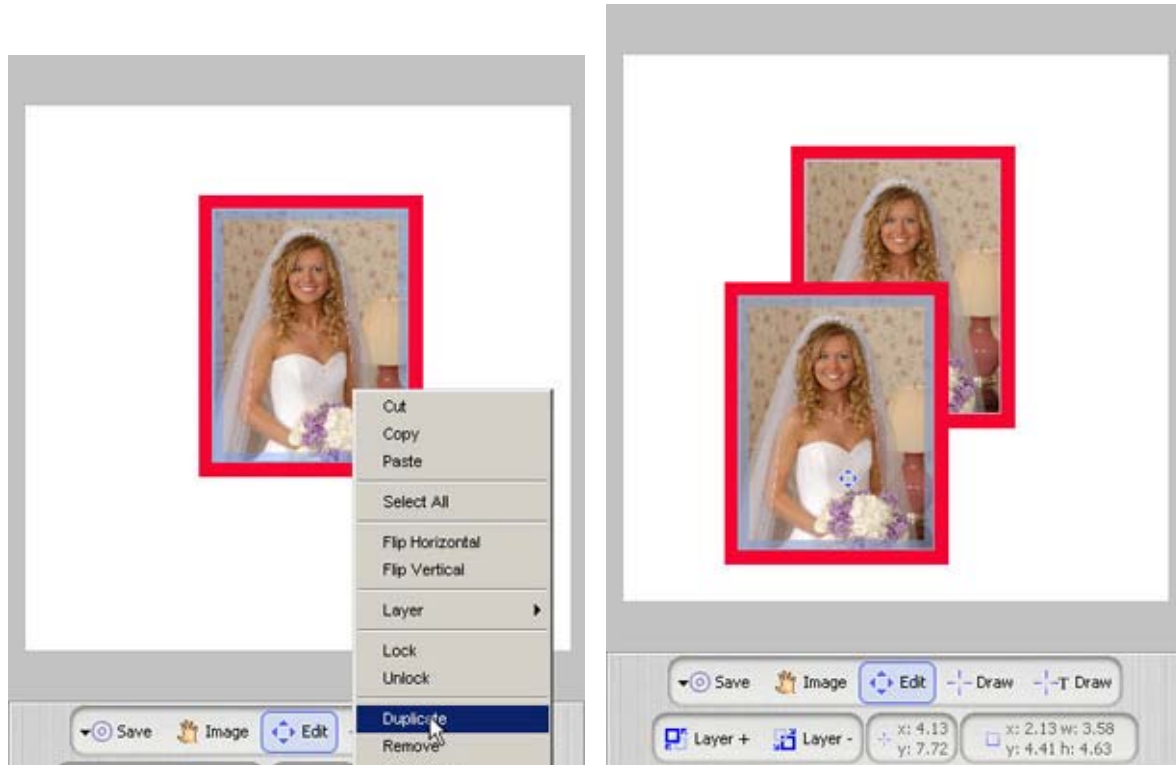
Finishing touches, such as borders, shadows or masks, not only complement your design but also give it a completed look. While proof books may not need extra embellishment, wedding pages or composites often look 'empty' without some dressing up. Several options are at hand to help you create a product pleasing to your customers.

Enhancing Nodes

Before you begin, there are a few important steps to remember to keep the process as fun and simple as we can make it. First, as you will read in the following directions, don't forget to check the box!

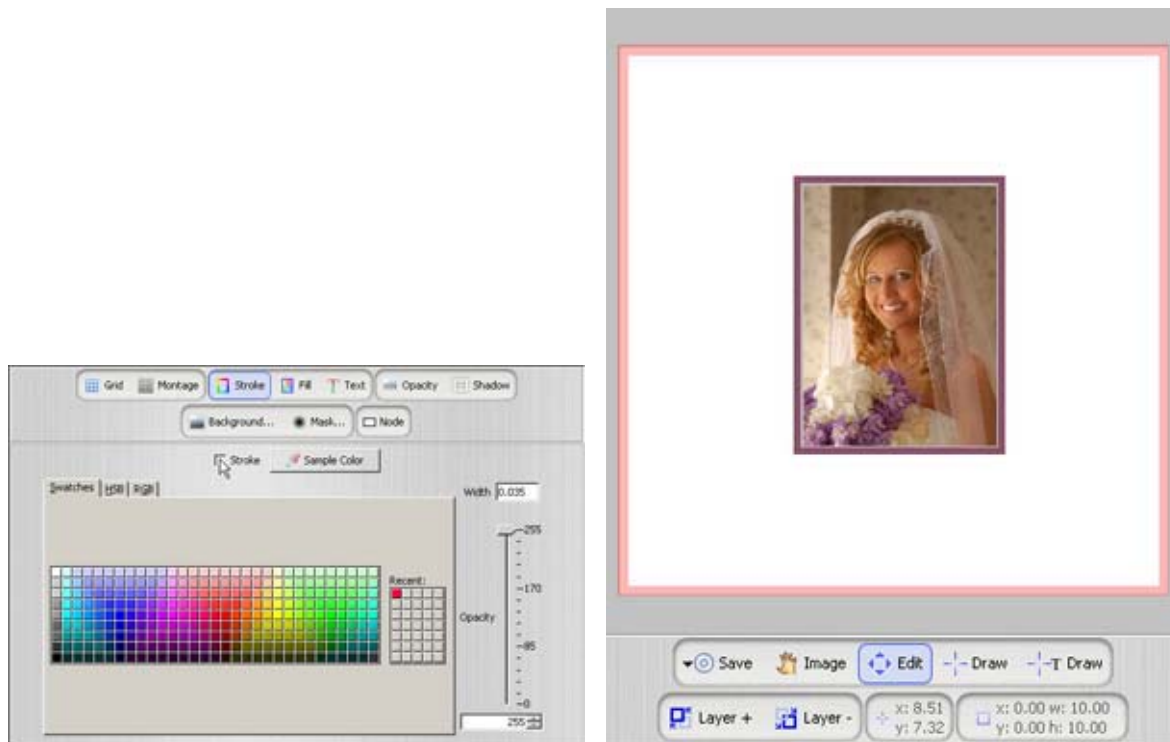


Most of the features are enabled by not only selecting an option, but by also checking the box that applies to them. These boxes are an important feature as they allow you to add or remove enhancements without removing the entire node and starting over! If you can't get something to work, chances are you didn't check the box! Second, with all of the choices you can make, you have to select the node you wish to alter. If you have indeed selected the node, it will be highlighted with a lightly tinted frame. You must use the Edit button, as described in the following, to select a node. While the Image button may appear to do this, it does not. Third, in addition to selecting each node, you can select all of the nodes. This will be a tremendous time saver if you want the same 'look' for each node. Right clicking over any node and clicking on Select All can easily accomplish this. Any effects you apply now will appear equally on all the nodes.



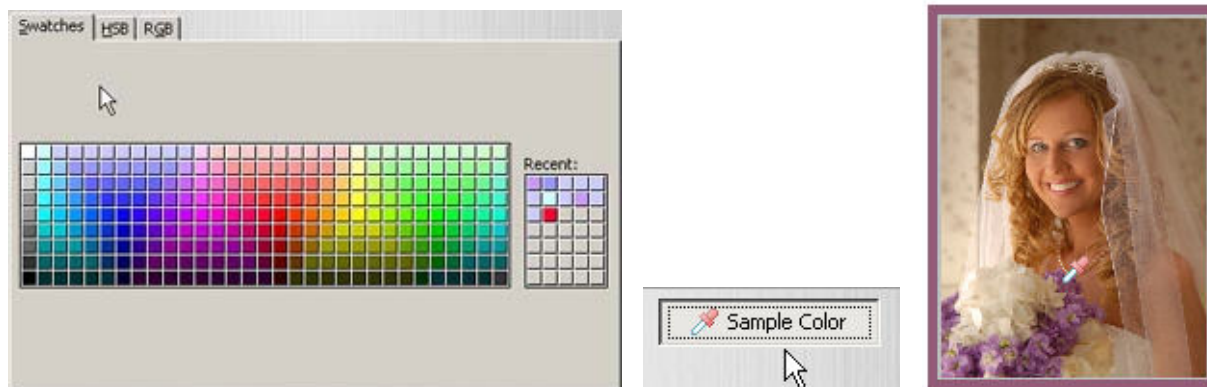
Finally, if you have created a node with multiple effects and then decided that you would like to duplicate it, you do not have to repeat the same steps to recreate it. Use the Edit button to select the nodes you would like to copy, right click and select *Duplicate*. You will not see the duplicate image until you move it. It will look like you have not created another node. Each time you click on Duplicate, there will be another node created. If you try to change an effect on a node, your boxes are all checked, you've done everything right, and it's still not working, you most likely have a node of which you are not aware! Select what appears to be the node on which you are working and remove it. You will likely be surprised to see the exact node directly beneath it. Until you have practiced duplicating, and remembering to move the node, there may be more than one. Some of this may seem a little confusing. Don't worry! After reading the following step-by-step procedures, it will all make perfect sense and knowing these points ahead of time will be understandably beneficial.

Strokes



A simple, but defining addition to your set-up is a color stroke. This option puts a 'frame' around the image, pulling it from the background. This is popular for proof books because the simple line does not distract from the image, but enhances the frame.

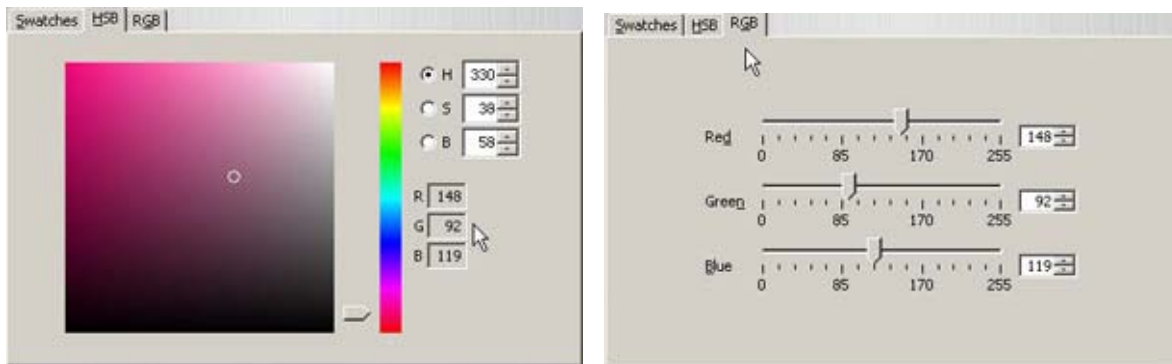
To add this type of border, use the **Edit** button to select a node – click once to select, highlighting it with a pale blue border. Click on the **Stroke** button, and then check the Stroke box. You must re-check the *Stroke* box each time you select a different node the first time. Once selected, the stroke will remain until you remove the check.



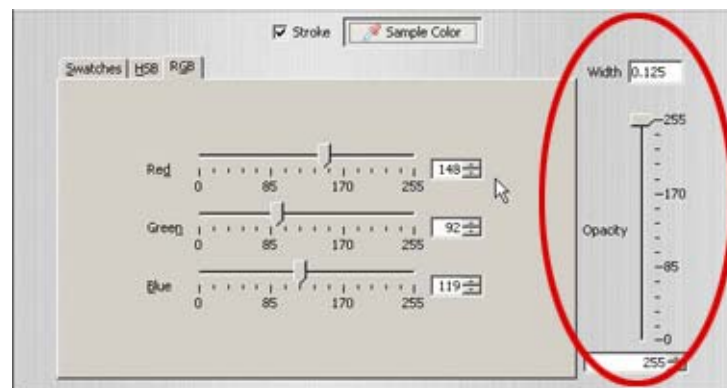
The color of your stroke can be selected quickly in two different ways. If you are just starting and do not have images in the nodes, choose your color from the *Swatches* shown. If you would like to pull a color from

an image you have added to the layout, click on the **Sample Color** button. An ink dropper will replace the cursor on your screen, with which you can choose your color. The color can be chosen from any image on

the page, not just the node you are framing. To select the next node, you must *click off* the **Edit** button, then *click back on*. Confused? Plain & simple – when you’ve finished the first node, just click on **Image**, then click on **Edit** and you’ll be ready to select the next node.

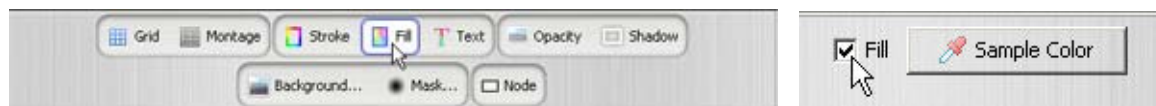


For a more precise color choice, use either the HSB or RGB tab. After selecting a color from the HSB tab, you may perfectly match that color by using the RGB numbers given for that specific color. Simply select the RGB tab and enter the numbers from the HSB tab.



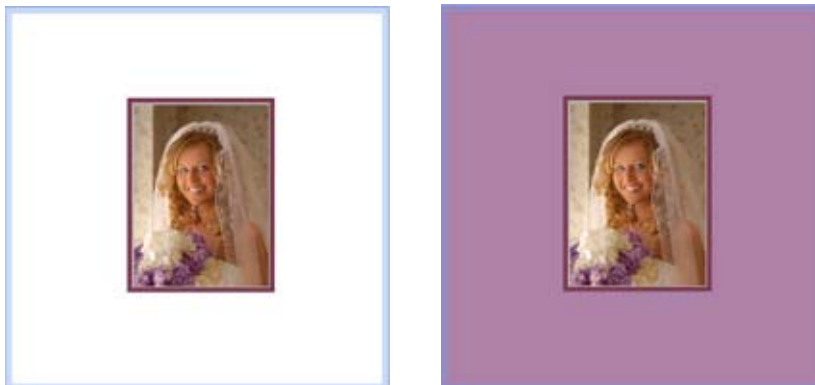
In addition to color choices, you can also adjust the depth and opacity of the stroke. Depending on the size of your screen, you may have to use the slide below your color options to see the scale for these changes. The width can be changed at .001 of an inch by adjusting the number; the opacity by using the sliding scale or entering a specific number. While these may seem like minor changes, the look they create is truly unique.

Fill

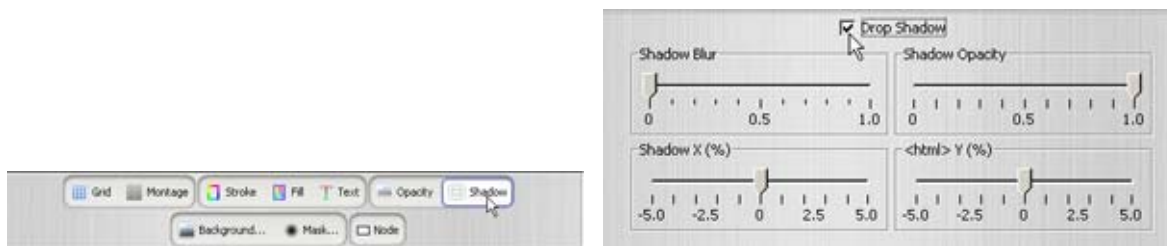


Giving your lay out a new background color creates a dramatic effect and gives the page a surprisingly new look. To change the background to a solid color, use the Edit button to select your background node. Click on the **Fill** button, then check the Fill box. As with the Stroke, Fill color choices are made using the

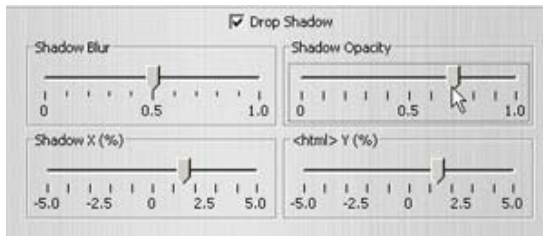
Swatches, HSB, RGB or Sample Color options. You may also wish to adjust the opacity of your new background. Again, as with the Stroke, simply using the sliding scale or entering a specific number will do the trick!



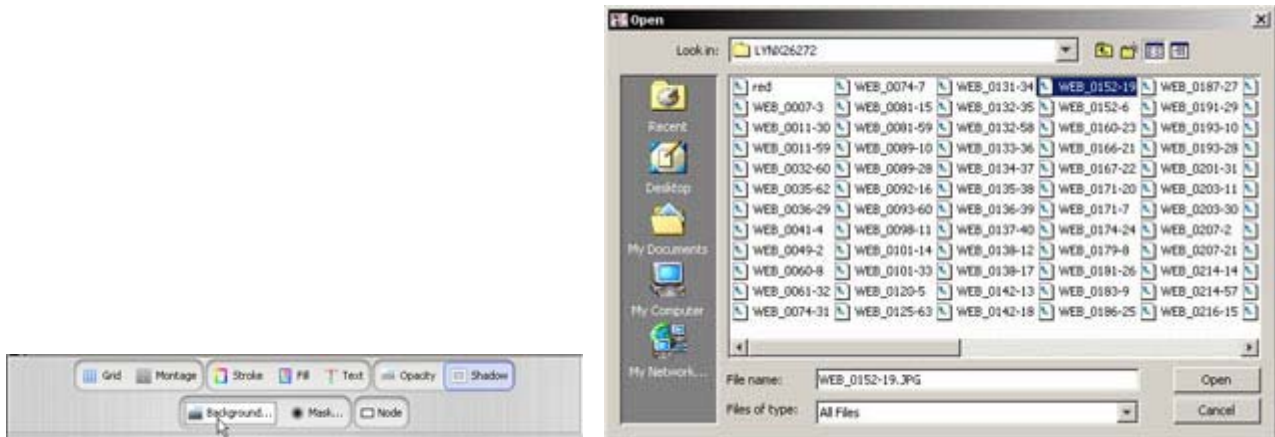
Shadow



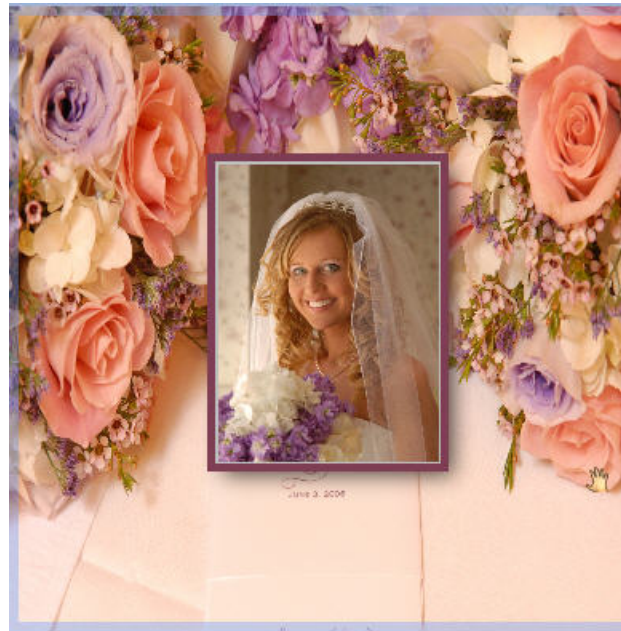
With or without a stroke, a shadow behind any or all of the nodes is another quick way of creating a more dramatic look to your page. As with any option, you must select the node you would like to adjust by using the Edit button, then click on the **Shadow** button and check the Drop Shadow box. The shadow first appears directly behind the node, so you will have to make a few adjustments to make it visible. These can be made using the slide rules that change the degree of opacity and blur, and also the placement of the shadow.



Background

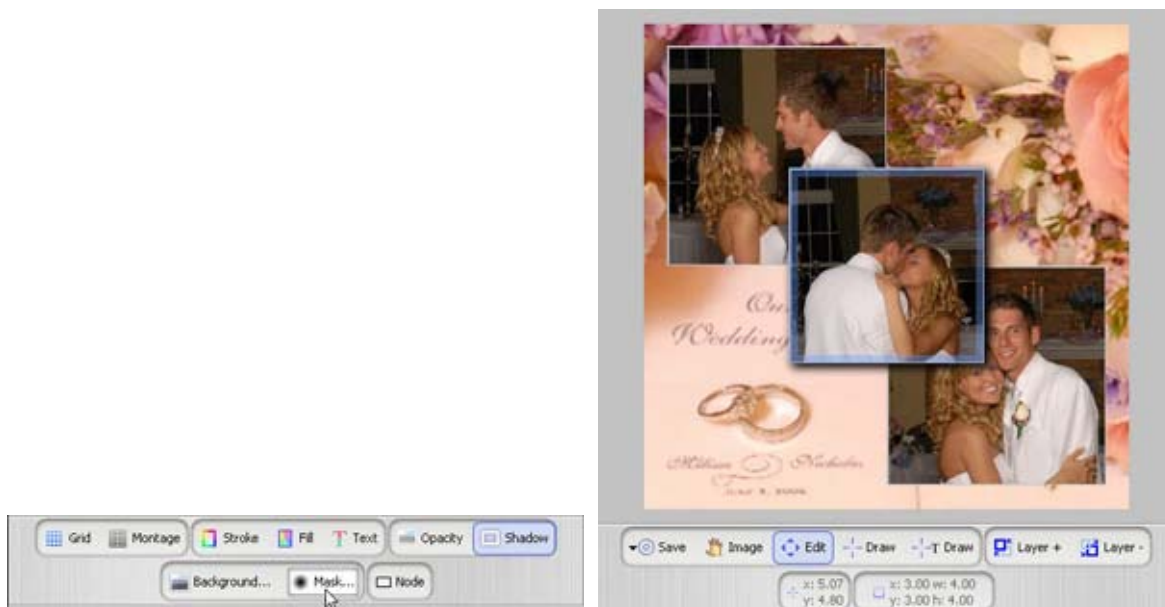


A background of your choice can be put in place behind the nodes. Any image; a particular sunset, mountain view, lake scene or even a pattern that you have created can be used as a background. To use an image for this purpose, click on the **Background** button. This action will bring up the window from which you will access your existing files and select your image. Once in place, the background image itself cannot be adjusted, but there are ways to change its appearance. Adding a fill can create a dramatic effect by decreasing the opacity of the fill, letting 'just enough' of your image showing through. Changing the color along with the opacity of the fill offers even more creative results that can be changed from layout to layout. Set aside some time to play a little with this technique. You will be surprised at the amount of variety it offers!

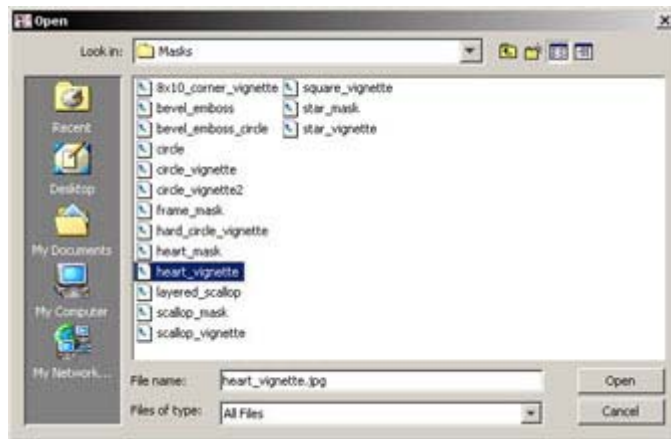


Mask

Masks, either created by you or provided for you, can be added to an image for a fun or dramatic effect, depending on how it is used.



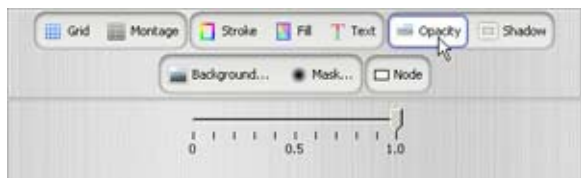
You will first need to select the node on which you would like to place a mask. Next, as with the Background, clicking on the **Mask** button will bring up the window used to access your files.



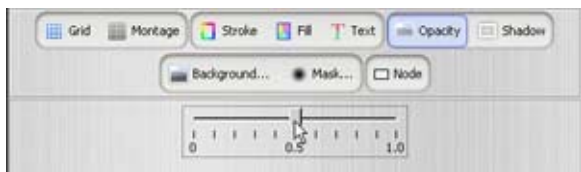
The mask chosen will appear only on the node selected. Like the Background, the Mask itself cannot be changed but can be manipulated by using a Fill. Set aside some time to play a little with both of these techniques. You will be surprised at the amount of variety they offer!

Altering Images

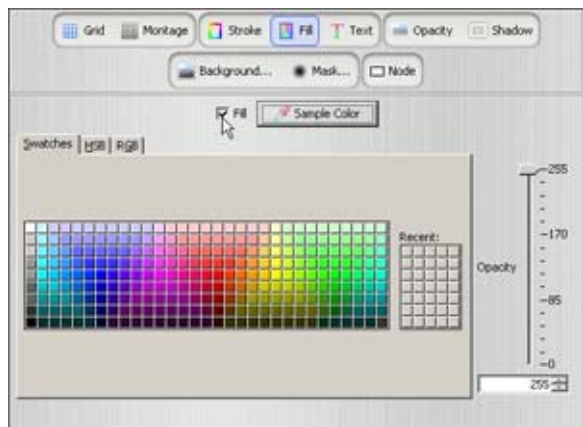
Opacity



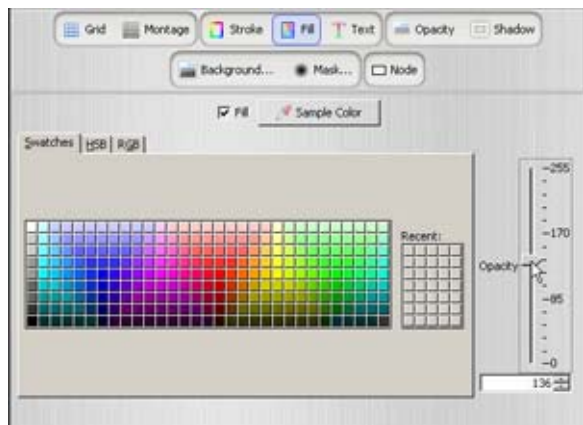
The opacity of the images in any node can be changed, simply, by using the **Opacity** button.



Typically used for the background image node (NOT an added Background), seeing a little less of an image can often create a very pleasing finished product.

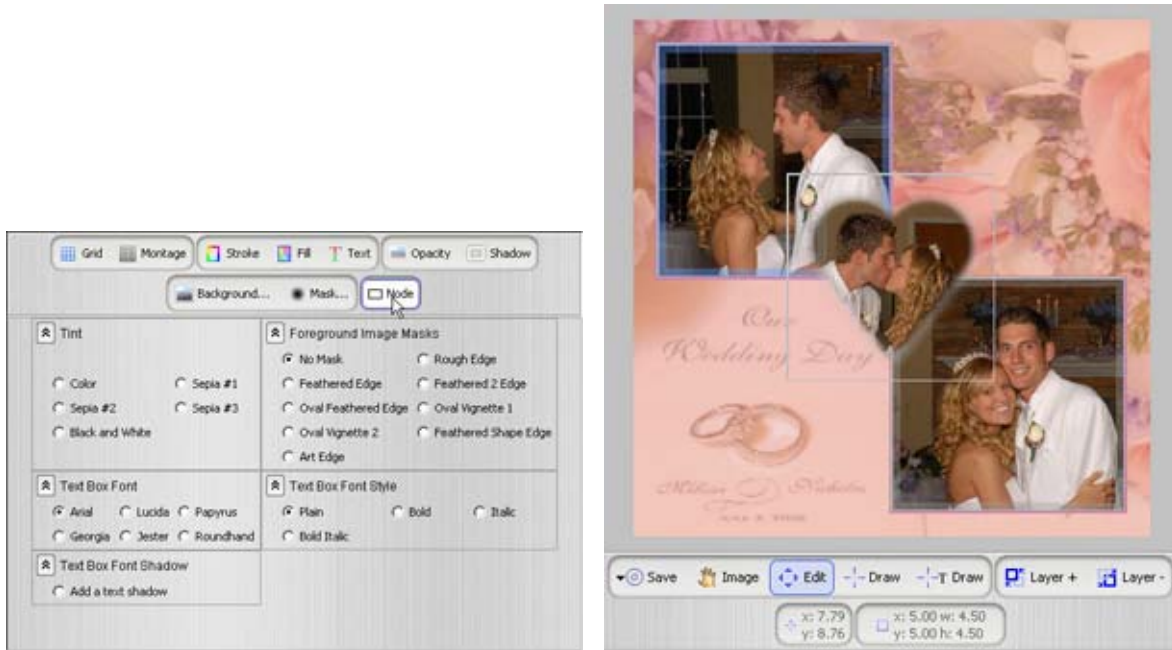


Using a fill color behind an image and decreasing the opacity of that image has a very dramatic effect that changes the entire look of a completed page lay out. To adjust the opacity, select the node with the Edit button, and then click on the **Opacity** button.



The image will change as you slide the scale allowing you to stop when you like what you see. If you have added a fill color, you must click on the Fill button to adjust its opacity. Give yourself time to experiment with these tools – you'll be glad you did!

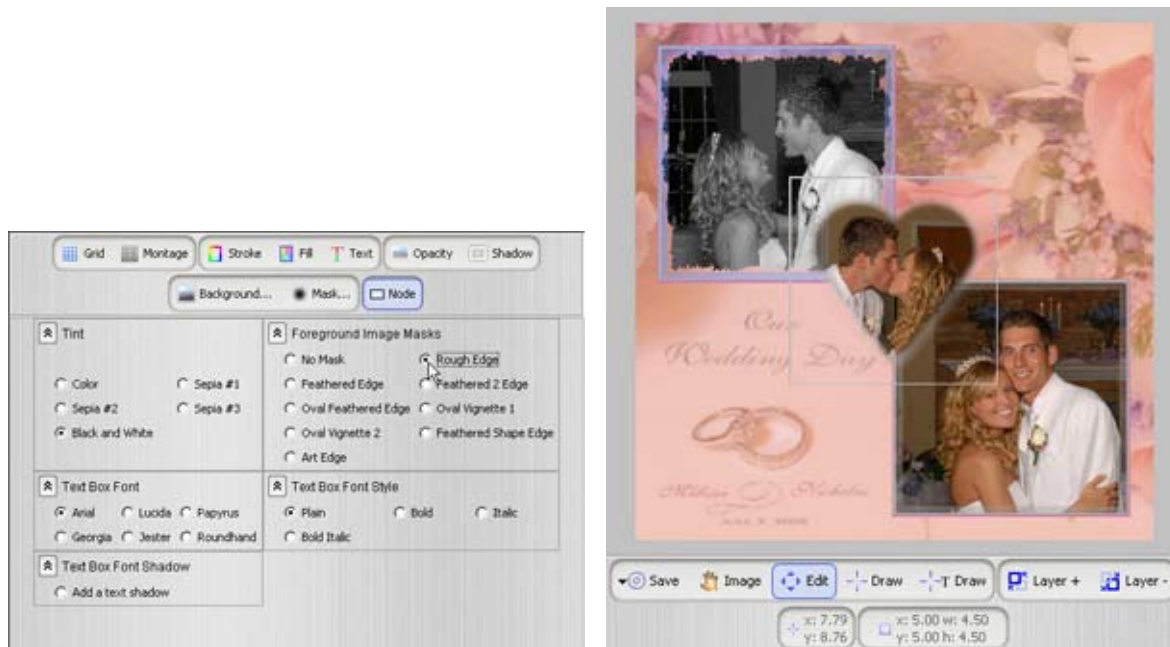
Tints and Masks



Clicking on the **Node** button gives you two more selections for image options.



After selecting the node containing the image you want to change, you can choose to have the image printed in color, black & white or three shades of sepia by selecting a *Tint*. Simply marking the dot instantly changes the image.



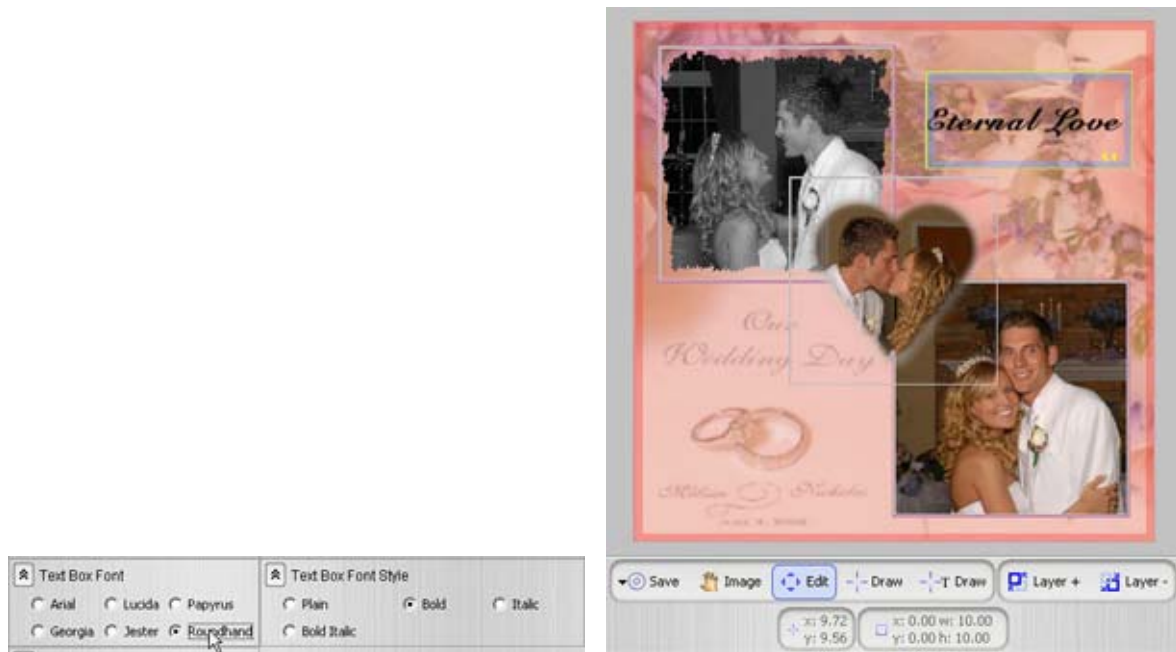
You can also add a preset mask to the image by selecting a *Foreground Image Mask*. As with the Tint, the mask will appear on the image when the dot is marked, making it easy to see and choose which mask suits the image best. You have very likely used these options in the past if you have ordered products through Ramsey ROES. There is no difference, except that these are products that you have designed!

Highlighting your text

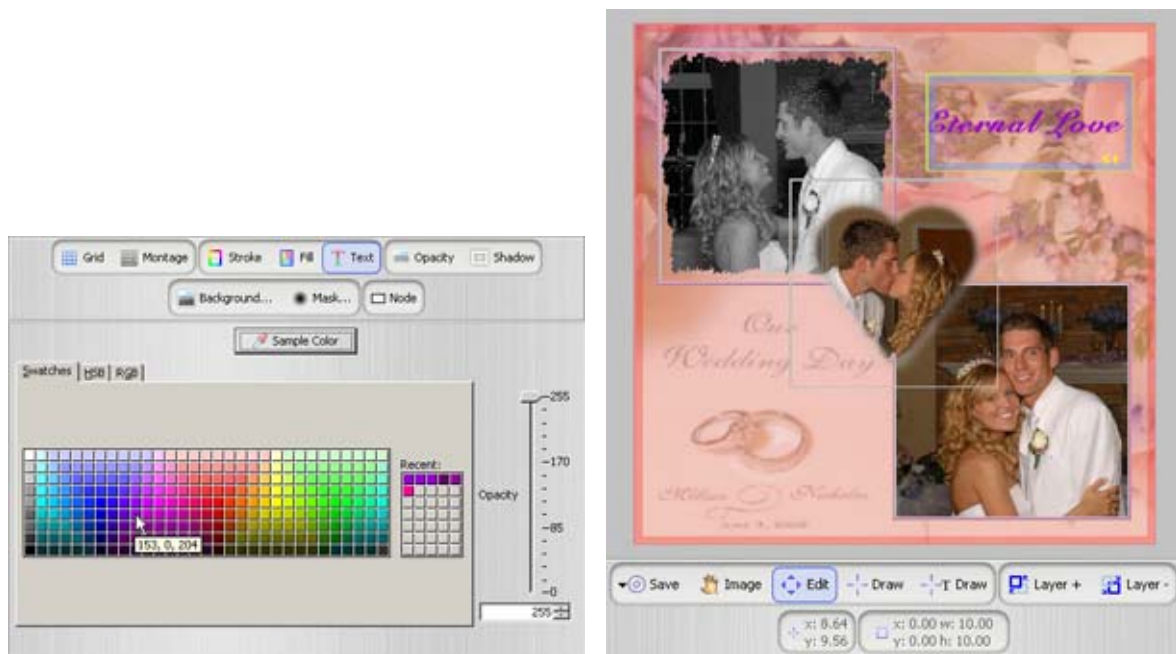


The **Node** button also allows you to personalize your text box. Both the *Text Box Font* and *Text Box Font Style* work in the same manner as the *Tint* and *Foreground Image Mask* options.

Pager Tool Tutorial

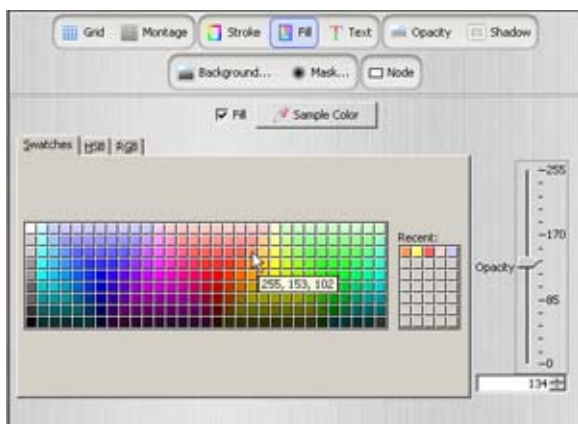


Select the text node and mark the dot at whichever font or style you would like to try. The font size will automatically adjust to the size of the box you have created and the amount of text inserted.

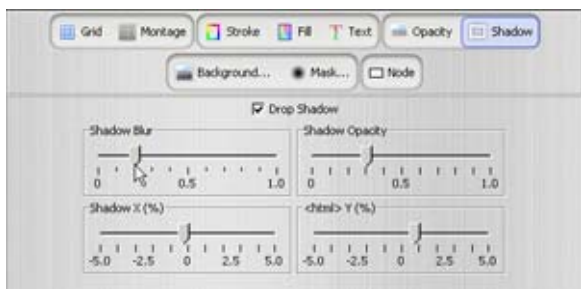


In addition, the special effects for the image nodes can also be applied to the text node! Text color can be changed.

Pager Tool Tutorial

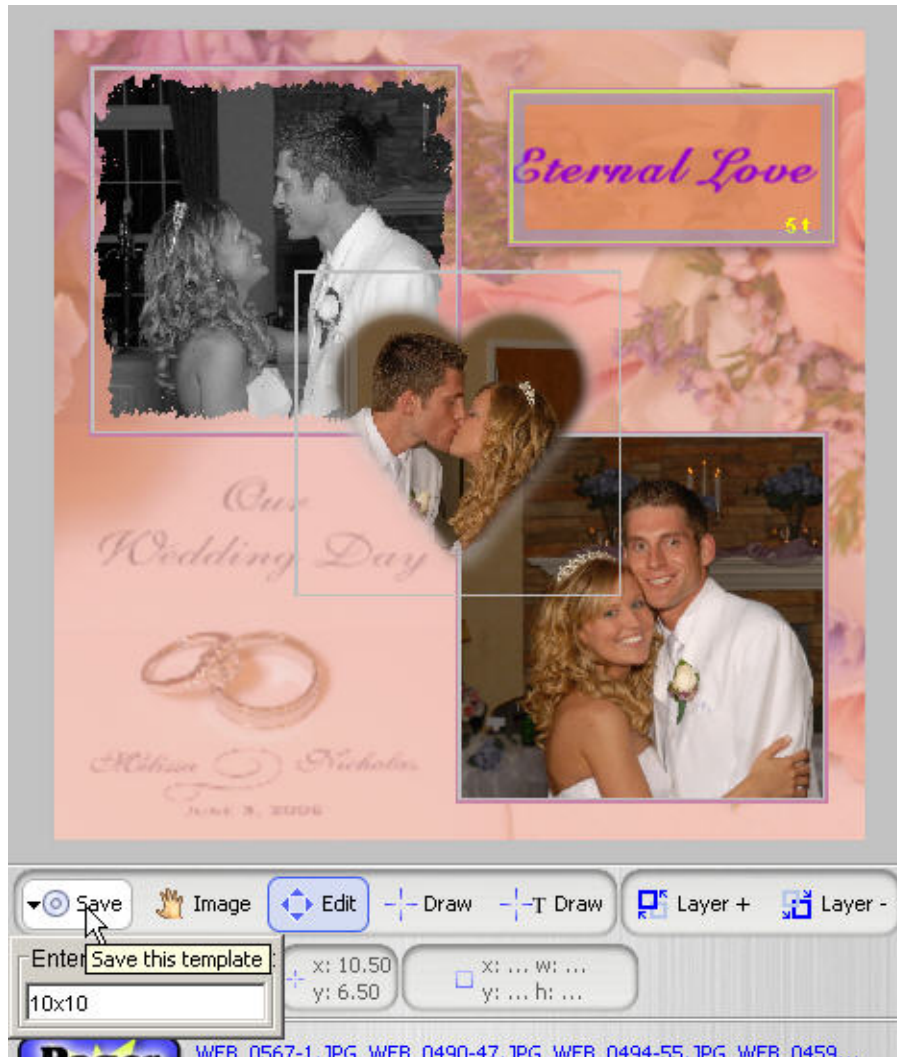


A stroke can be added. The node can be filled. It can be given a shadow. All of these options can have the opacity changed!

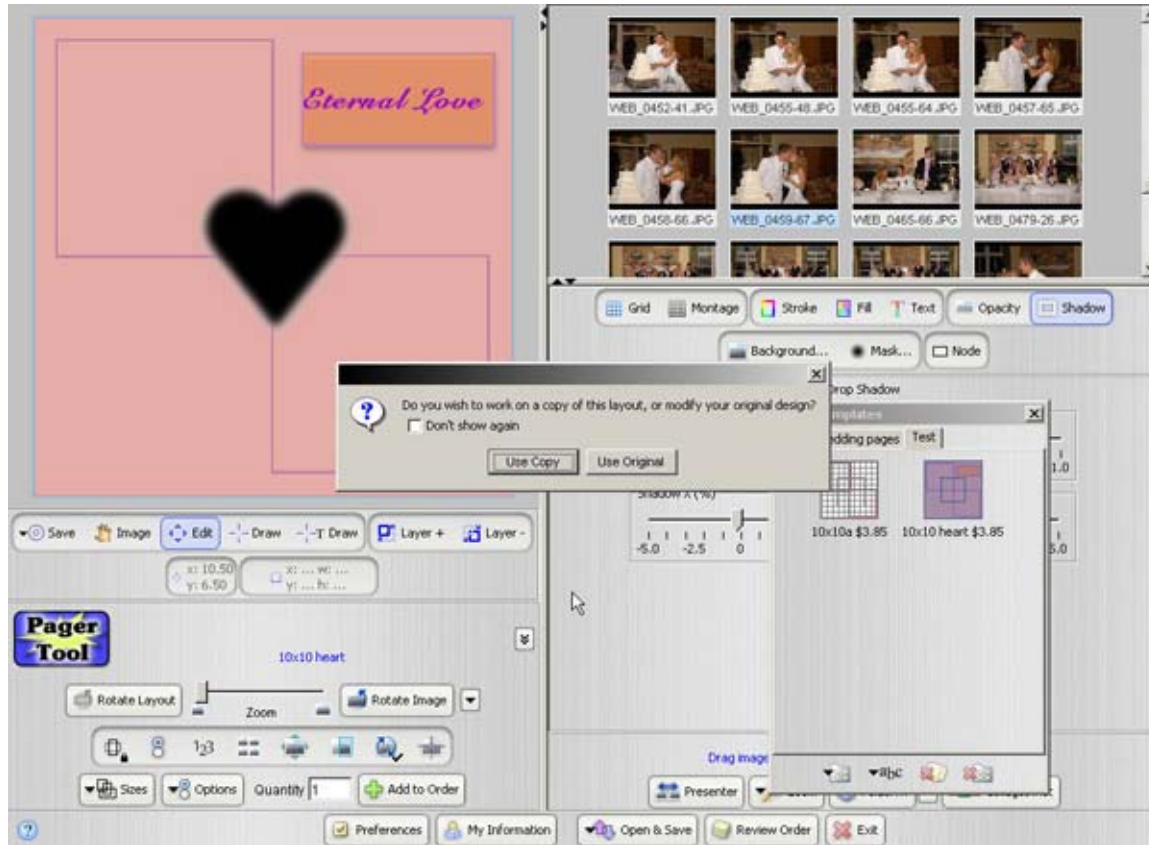


After allowing yourself time to experiment with the features in the Pager, you will be delighted to see what you have taught yourself to create. The options available, along with your creativity, will lead to an endless supply of distinctly unique layouts. You will have so much to offer your customers – we're sure you'll have something to please everyone.

Saving Your Templates



Now that you've completed your masterpiece, you'll want to save it for future use. (Keep in mind that the layouts can always be adjusted as needed to personalize or simply add something new!) Saving is simple – click on **Save!** The *Enter a Template Name* drop box will appear. Give your new page a name that will distinguish it from others you have created.



Each template you create and save will appear in the *My Templates* window when you open Ramsey ROES.

Ordering from Your Created Layouts

To place an order using your templates, you will first have to click on the **Pager Tool** button. The **My Templates** window will pop up, allowing you to set up an order from the products you have created. Other than using your own templates, completing the order process is identical to any other order you have placed.

You did it!

From a single page to complete wedding albums, the Pager Tool is an exciting way to use your own flair for creativity. The possibilities are endless with the number of effects available. Your customers are sure to be pleased with the personal treatment you can offer them by creating something especially for them! The Pager Tool is user friendly and easy to learn. Feel free to call for additional assistance, remember the few extra hints (check the box!) given and you'll be designing professional portrait layouts before you know it!